

Welcome to **LARON**



Safety Programs and Certifications

Safety Qualifications



Supplier & Management Qualification



- Laron prioritizes safety and strives to be a zero incident workplace. To accomplish this, Laron has created a process driven safety management program including a structured injury and illness prevention program
 - The program is founded on management leadership, worker participation, hazard identification, hazard prevention and control, education and training and constant evaluation and improvement
- Key tenants of Laron's safety program include:
 - Training employees
 - Subjects in training include: energy isolation, confined spaces, working at heights, overhead loads, hazard communication, powered industrial equipment and protective personal equipment
 - Regular audits of safety procedures and accomplishments
 - Examination of resource allocation towards injury prevention is regularly undertaken
- Laron has a dedicated team of safety professionals to ensure all jobs meet state and federal laws and regulations
- The Company is certified and approved to provide training which meets the requirements for qualification under the MSHA Part 48 surface metal/non-metal and OSHA construction worker programs

Diverse Customer Base and Project Size

Laron performs a wide range of projects (from a size and capabilities perspective) for customers that include Fortune 500 and leading multinational companies, utilities, national and regional construction and contracting companies and government agencies



Significant Investment in Facilities

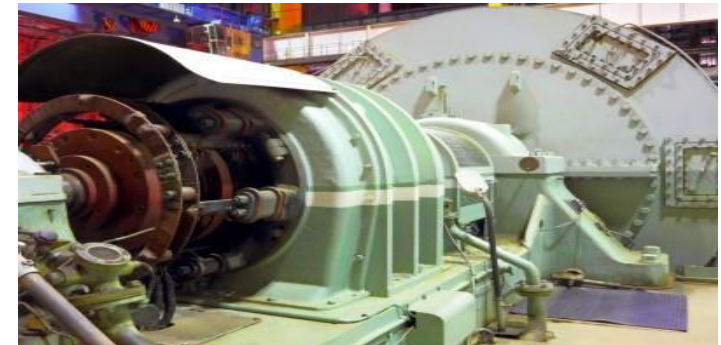
Laron has four facilities strategically located in Arizona and Utah to support its significant customer base in the Western US

- Three facilities in Arizona and one in Utah
- Currently utilizes 207,000 sq. ft. of facilities located on 22 acres of industrial property
- Significant investment in machining, fabrication, repair and test equipment
- Substantial overhead lifting capabilities allow Laron to complete large project and service work
- Close access to interstate highways and railroads enable the movement of large equipment



Wide Ranging Capabilities

Mechanical Repair	OEM certified repair facilities that redesign and remanufacture mechanical equipment
Fabrication	Welding and fabrication services that meet the highest industry standards. "R", "S" & "U"
Machining	Machining capabilities to support the repair of mechanical and electrical equipment and custom engineered projects
Electrical & Motor Repair	SKF- and UL- certified repair facilities for a wide range of AC, DC and synchronous motors and generators
Field Services	A wide range of engineering, mechanical, and repair and maintenance field services provided 24 hours a day / 365 days per year
Predictive Maintenance	Trained professionals and advanced equipment to diagnose potential equipment failure before it occurs
Custom Engineered Solutions	Innovative solutions to challenging customer requirements including large scale equipment (see photo at bottom right) and new or reverse engineered parts / products
Equipment Storage	Electric motor and equipment storage with routine checks and maintenance programs



Mechanical Repair

Laron delivers highly technical repair solutions for large and heavy mechanical equipment in its Timken- and SKF-certified facilities and significant base of field service assets that are equipped to handle the largest parts and most difficult repairs

Gearboxes

- Reduction and angle drive repair
- Planetary gear sets
- Countershaft boxes
- Gear inspection and testing
- Flender and SEW Authorized Repair Facility

Pumps

- Centrifugal pump
- Screw pump
- Positive displacement piston pump
- Blower and compressor repair
- Extruder repair

Hydraulic Equipment & Valves

- Hydraulic motor and pump repair
- Accumulator repair
- Actuator design, fabrication and repair
- Cylinder design, fabrication and repair
- Flow control

Field Service

- Equipment removal and installation
- Laser coupling alignment
- Laser Tracker precision measurement
- Vibration analysis and predictive maintenance



Machining

Laron possess a large base of machining equipment to handle jobs of all sizes both in its facilities and in the field

Milling

- Horizontal bore mills
 - Up to X=588", Y=150", Z=72"
 - Unlimited weight capacity
- 8 Horizontal bore mills



Cranes

- 50 ton crane
- 85 ton max with spreader bars
- 2 X 50 ton forklifts
- Critical heavy maneuvers

Lathe & Turning

- Horizontal lathe
 - Up to 74" x 480" with 54" swing, 70 ton capacity
- Vertical turning lathe
 - 210" swing, 141.75" under rail, 136.75" under tool



Field Service

- Mounting preparation and installation
- Milling up to 84" of travel
- Precision alignment
- Inspections and repairs
- Bores up to 120" diameter x 480" long

Fabrication

Through extensive training, testing and certification Laron has established a reputation within the industry for the quality of its fabrication work, allowing the Company to always deliver highly innovative engineered solutions in its facilities or in the field

Heavy Metal Fabrication

- Manufacturing components up to 100 tons, 30 feet under hook and rail access
- Pump and motor base manufacturing
- Heavy crane lift tower fabrication
- Grinding mill shells and hoist drums

Pressure Vessel

- Power plant maintenance
- ASME, S, U and NBIC R code stamps
- Pressure vessel design and fabrication
- Boiler and pressure vessel repair
- Pressure vessels, heat exchangers, accumulators and cryogenics

Process Piping

- Pipe spool manufacturing and installation
- Skid mounted piping system fabrication
- All schedules and alloys / exotic metal welding
- Large bore, small bore and water injection
- Combustion and steam turbine

Welding

- > 300 ASME and AWS weld procedures
- Forging die block weld repair / high alloy steel welding
- Automated base metal weld build up
- In house CWI's and Quality Assurance



Motor Repair

Laron has the process and test equipment to offer a full range motor repair services for AC, DC and synchronous motors and AC motor generator sets in EASA member and SKF- and UL- certified motor repair facilities

AC and DC Motors

- AC motors fractional up to 10,000 hp (all speeds) up to 13,800 vac, including horizontal motors
- DC motors fractional up to 5,000 hp (all speeds) up to 500 vdc
- Repair of AC motor generator sets

Synchronous Motors

- Repair capabilities up to 7200 VAC
- Full rewind of AC stator and DC coils
- Bearing housing repair

Balancing and Motor Testing

- 30,000 pound dynamic balancer with 100 inch swing and 25 foot bed length
- Motor testing up to 13,000 vac
- Dynamometer testing to 2000 hp

Field Service

- Removal and installation of all equipment
- Laser alignment
- Balancing and vibration analysis
- Infrared thermography



Field Services

- Laron has the ability to deliver highly skilled field service and repair resources throughout the Southwestern US 24 hours a day / 365 days a year
- Field services include: mechanical, machining, welding, engineering and inspection and predictive maintenance
- Examples of highly specialized field services provided by Laron include:
 - Custom designed and in-house built journal squirrel machining tool
 - Machining of a hydro unit's generator shaft in the thrust collar
 - Emergency removal, refurbishment and reinstallation of a primary crushing system
 - Removed seized studs from a reactor coolant pump housing which was installed in the reactor coolant system
 - Turnkey design, fabrication, machining and load testing of turbine shell rotator for a nuclear power station Main Power Turbine
 - Construction of two Liquid Natural Gas ("LNG") plants
 - Re-tubing of a solar power plant



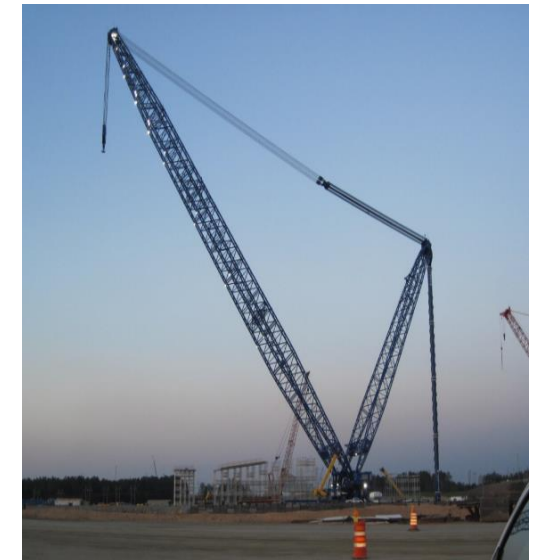
Custom Engineered Solutions

Laron's deep industry knowledge and technical capabilities allow it to deliver a wide range of innovative custom engineered solutions to solve the most complex customer challenges, specific offerings include:

- Design services
- Reverse engineering
- Performance, quality and load testing

Example projects include:

- World's largest derrick crane for a nuclear power plant
- Dual lane heavy haul transporter capable of hauling 300 tons (load tested up to 500 tons)
- World's largest Observation Wheel (550 feet tall)
- Spiralator design, automation and synchronized function control
- Custom designed and manufactured turbine rotating device for a nuclear power plant



Laron Distribution

Laron has long standing relationship with leading OEMs of electrical and rotating equipment

Electric Motors

Variable Frequency
Drives

Transformers

Motor Protection
Relays

Gearboxes

Electrical
Components

Qualified Suppliers



PM and Equipment Storage

Predictive Maintenance

Vibration Analysis

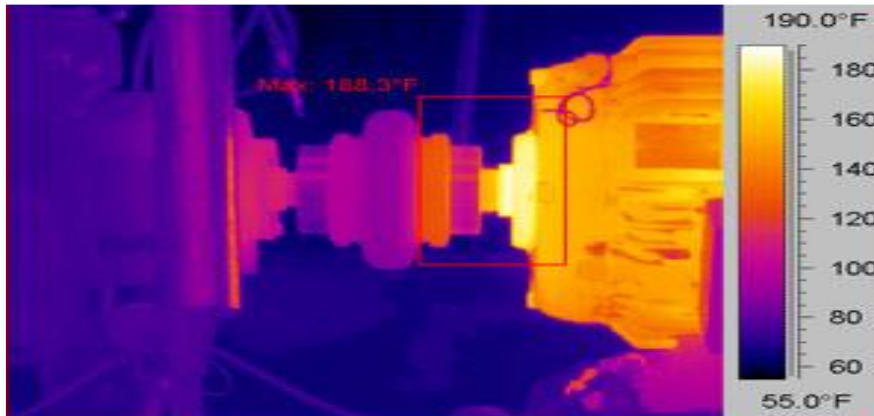
Root Cause
Failure Testing

Machine Alignment

Motor Condition
Testing

Instrument
Calibration

Thermography



Equipment Storage

Maintenance

- Routine inspections
- Motor shafts turned monthly
- Additional services upon request

Pre In-service
Maintenance

- Motors test run at full voltage
- Can be delivered 24/7/365
- Maintenance records

Customer and
Warranty Services

- Verification and inventory tracking
- Partial assembly and disassembly
- Warranty may be extended for non-use periods up to 5 years



Authorized Service Center Relationships

Laron serves as an authorized service center for many market leaders including:

