



WE KEEP IT MOVING





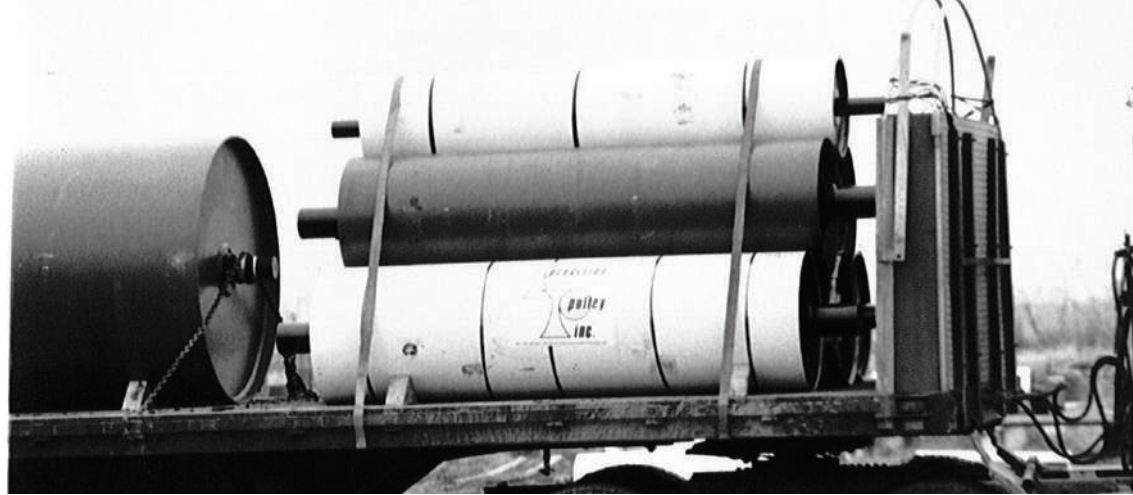
GLOBAL PRESENCE

Day in and day out operations around the world demand efficiency and reliable systems to keep the business profitable and running at all times. Today's customers are not looking to collect stock. They want to count on the components that they need at the exact time they plan to use them.

Offering an optimal design for your specific needs, you can trust your name in ours with the latest in high performance conveyor components for a wide range of applications, from 1 to 10,000 horsepower.

Our promise is simple: Quality products with a competitive price and unbeatable customer service to support your needs around the world with the confidence of having your PPI team working side by side with you.

Whether the requirements of your operation are underground or above ground, PPI is your ally supplying you with components that will perform, outlast and support your productivity goals from beginning to end.

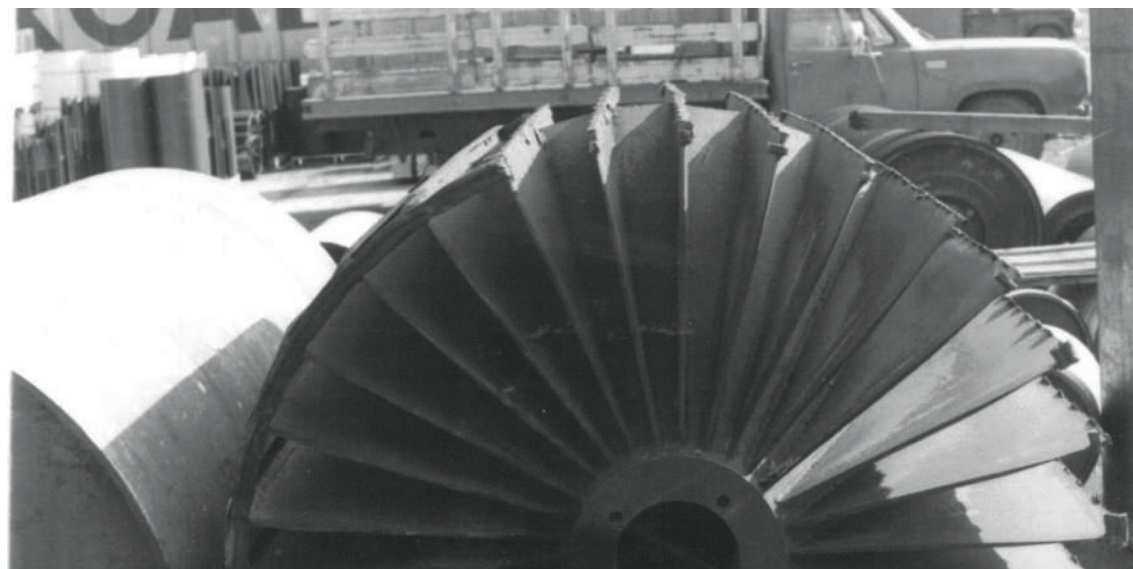


THE BEGINNING

Founded in 1977 by a group of seven determinate young minds, the trajectory and accelerated growth of Precision Pulley & Idler (PPI) to become the #1 pulley and idler supplier in the world continues moving in giant steps.

PPI started the business with the fabrication of standard conveyor pulleys targeting the aggregate market. The success of the product arrived with a huge demand. With the exponential amount of sales, also came the increased production capacity for PPI.

In less than 40 years, the company opened a total of 10 operations including manufacturing facilities, warehouses, service centers and a training center in the United States as well as two international facilities in strategic points of the globe.



OUR VISION

PPI will be a global provider of high performance and innovative conveying products and solutions. We will be the #1 choice earned through unparalleled quality, delivery, and customer service. We will ensure the continued success and sustainability of our **100% Employee Owned Company**.

OUR VALUES

We will be an industry leader through:

RESPECT employees, customers, suppliers and the environment

ATTRACT engaged employees and customers

LISTEN to employees and customers

CARE for employees

INVEST in training and development

SUPPORT the communities in which we do business

LEAD we will be an industry leader



CANADA

- Surrey, British Columbia
- 94,000 ft²



WAREHOUSE

- Denver, CO
- 2,000 ft²



WEST COAST SERVICE CENTER



- Sacramento, CA
- 44,000 ft²



SOUTHWEST SERVICE CENTER

- Arlington, TX
- 24,000 ft²



UNITED STATES

CORPORATE OFFICE & TRAINING CENTER

- Pella, IA
- 26,200 ft²
- Pella, IA – 3 Plants
- 158,000 ft²
- Corning, IA – 4 Plants
- 203,500 ft²
- Lenox, IA
- 120,900 ft²
- Algona, IA – 2 Plants
- 98,350 ft²



NORTHEAST SERVICE CENTER

- Lewisberry, PA
- 20,400 ft²



SOUTHEAST SERVICE CENTER

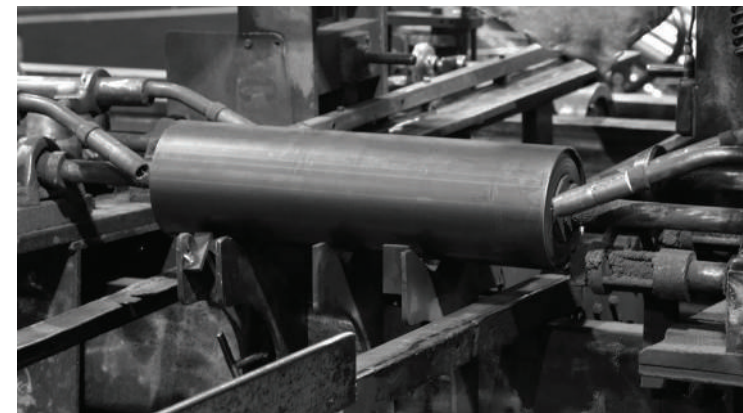


- Cleveland, TN
- 45,400 ft²



CHILE

- Santiago, Chile
- 48,000 ft²



FACILITIES

The global footprint is not new for PPI. The fact that the company serves a diversity of operations including aggregate, mining, package handling and the food industry makes the presence of PPI components possible worldwide.

Today, PPI has over 700 global employees and 12 manufacturing plants in the United States, as well as the two new international locations. Each plant is dedicated to producing specific products and serving their customers in the best possible way.

“This manufacturing approach allows us to be very focused, but it also gives greater flexibility to react quickly to the customer’s needs.” – Roger A. Brown. President of PPI

CAPABILITIES

When it comes to manufacturing methods, we are continually evaluating state-of-the-art technology equipment and the most qualified human capital to assure we remain the leaders in providing the highest quality products with the shortest lead times in the industry.

IN HOUSE CAPABILITIES

- Shaft machining up to 28" in diameter and 315" long
- Vulcanized lagging up to 72" diameter and 192" face width
- Special surface protection available
- Casting urethane lagging
- Total Indicator Run-out (TIR) and roll drag testing for idlers
- Performing and supplying reports for customer directed inspections

ENGINEERING AND TECHNICAL SUPPORT

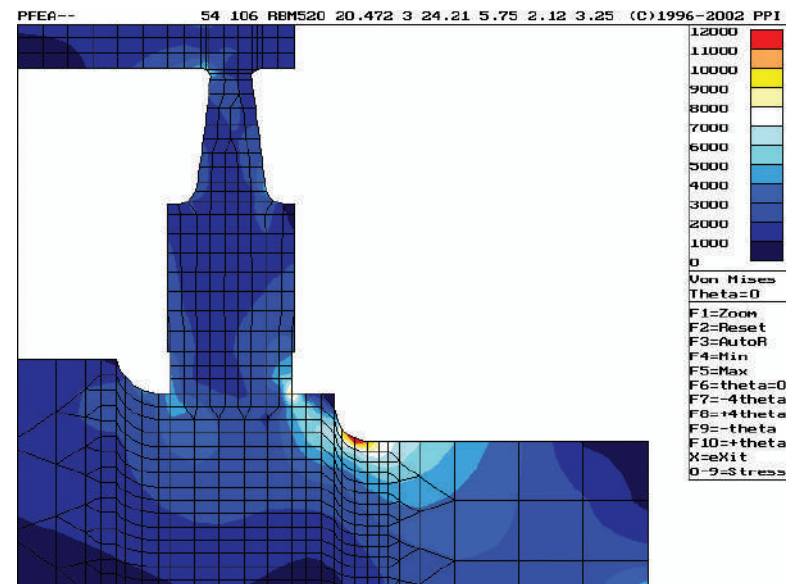
Robust engineering group available utilizing state of the art design tools such as proprietary software PFEA and P-FLEX to optimize each and every design

FIELD TECHNICAL SUPPORT

A group of specialists is available to assist with troubleshooting, surveys and site visits to provide complete service from beginning to end

PRODUCT DESIGN

Offering Profile Disc and Turbine T designs for maximum product predictability and strength as well as custom products to fulfill





ON-SITE EXPERTS

PPI has more than 35 years dedicated to serving you bringing knowledge and reliability to the field, with a complete staff of engineering professionals to handle your requirements quickly and accurately.

You asked for support and we respond by offering an unbeatable customer service that fulfills your product needs and a robust team of Field Technical Engineers available worldwide to give you the confidence of having the PPI team and methods working side by side with you. We supply you with components that will perform, and an entire team of experts ready to support your productivity goals from beginning to end.

PPI[®]
Precision Pulley & Idler



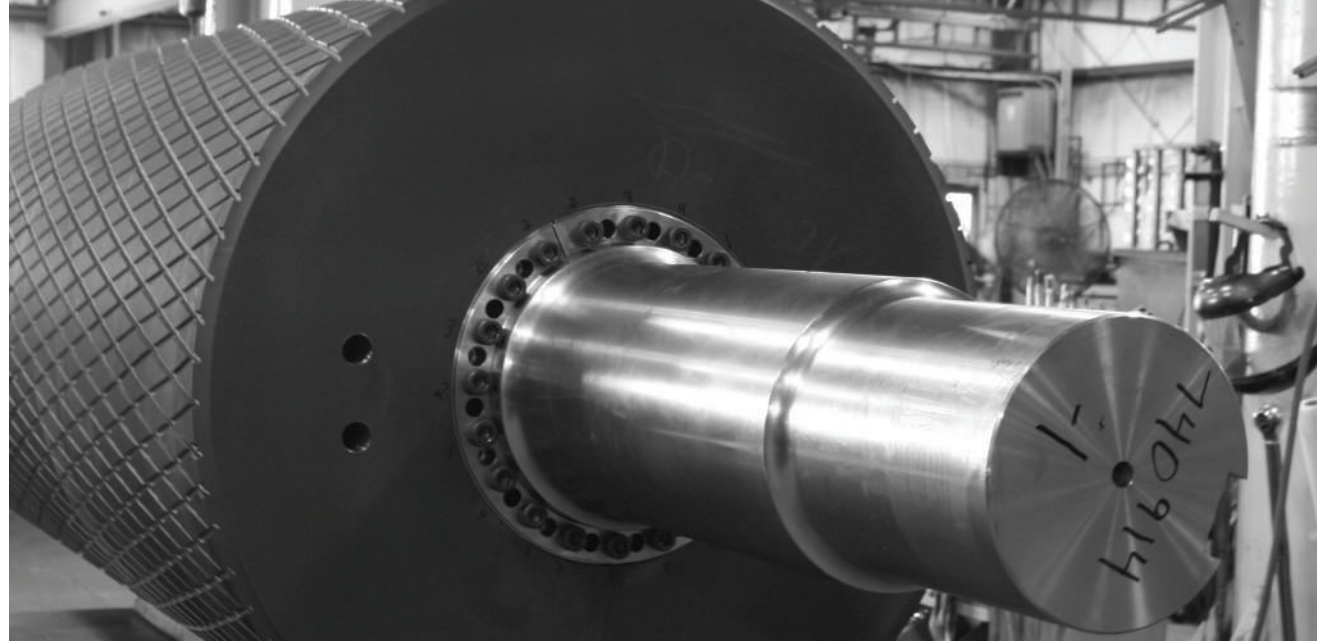
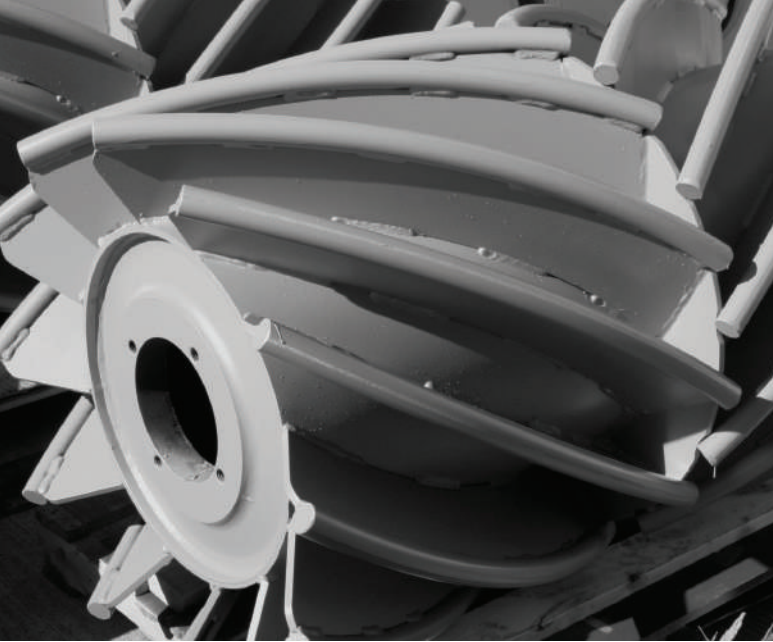
INDUSTRIES

PPI jumped into business with the fabrication of standard conveyor pulleys targeting the aggregate market. But we haven't stopped there. For almost four decades, PPI has developed remarkable products that have made a difference for a number of industries. Within 39 years, the company built a solid infrastructure enabling diversification and significant product developments in markets such as hard rock, coal, cement, package and unit handling. The incursion in the food industry and fabrication of sanitary designed components came with the acquisition of KOFAB™.





Seldom does a day go by that your life isn't touched
by something that was moved on a PPI pulley or idler.



PROBLEM SOLVERS

PPI is world renowned for providing effective conveyor solutions which has enabled the company to supply pulleys, idlers and accessories to a wide diversity of projects where reliability is vital.

PPI has a complete line of conveyor components available to meet your needs from standard off-the-shelf items to unique specialty products. Whether your challenge is belt tracking, wear or cleaning issues, PPI has what it takes to keep your operation running.

WE KEEP IT MOVING



PRODUCTS

Over that time, PPI has emerged as the industry leader providing a full line of CEMA rated idlers. In addition to standard CEMA idlers, the experienced staff of engineers assess unique application requirements and design idlers to meet specifications in the most productive manner. Customers look to PPI to provide products that meet their specific project requirements in the most demanding applications around the world.

When it comes to pulleys, no other manufacturer is as well equipped to produce solutions to the world's most challenging applications as PPI. From extreme belt tensions and massive sizes to some of the coldest conveying environments on earth, PPI has the expertise and experience to keep operations up and running.

Whatever the application may be, make PPI the preferred choice for top of the line conveyor components.





100% EMPLOYEE OWNED COMPANY

PPI is proud of its culture of caring where employees value each other's efforts to improve our company to better take care of our customers. PPI creates opportunities to impact families by providing jobs and personal development creating opportunities to have a career and to learn how to invest in their own future.

At PPI, it is our goal to create a new generation of business partners that can enjoy the peace of mind of a good retirement plan and the satisfaction of being rewarded for their great performance. This includes great benefits, competitive wages and a generous profit sharing program.

The benefit of the employee-owned company extends beyond its employee owners. PPI invest in technology, its facilities, and in its people to equip the team with the right tools to enable the success of our customers and to be positive influences in the industries we support and in the communities we live.





THE CORE

At PPI we are committed to improving the lives of our employees through the sharing of the profits of the company, development and training opportunities; having safe work practices and providing a workplace that rewards effort and positive attitude.

We are committed to pleasing you, our customer by providing a quality product and meeting needs quickly and effectively.

We are committed to not harming the environment by recycling as much as we can, avoiding spills and reducing our waste streams.

We are committed to improving the communities in which we live and work through donations of money to schools, civic organizations, community events and activities and by donating our individual time through our VPL program to help others. All of these commitments are central to the values of PPI.



USA | CANADA | CHILE

www.ppi-global.com | sales@ppi-global.com

Product shown are for illustrative purposes only and may display optional accessories or components. Please contact your sales representative for more information on product specifications. PPI respectively reserves the right to make changes in engineering, design and specifications; add improvements; or discontinue manufacturing at any time without notice obligation.

PPI, KOFAB, and their respective logos are trademarks of Precision, Inc. in the US and or other counties.
Copyright © 2016 Precision Pulley & Idler, all rights reserved.