

The  
uncommon  
lubricant  
company



# Mining Industry Solutions

High performance lubricants



# WE DESIGN CUSTOMIZED SOLUTIONS

Interlub is a company that specializes in the lubrication of the most critical applications in the industry; applications where the operating conditions are so demanding that a standard product will not meet the demands. Our solutions guarantee the protection and availability of each critical mechanism.

We have the most technologically-advanced, flexible platform in the industry, which has allowed us to develop solutions for more than 30 years that impact the sustainability and efficiency of more than 2000 companies worldwide.

## WE COLLABORATE WITH INDUSTRY LEADERS.





# LUBRICATION FOR EXTREME CONDITIONS

*Our goal is to minimize losses caused by friction and wear in mechanisms crucial to your daily operation.*

## Our focus

The mining industry requires very specific operating conditions that affect the efficiency and productivity of processes; oversize loads, variable temperatures, high levels of vibration, different speeds, and humid environments, among others are some of the factors that impact the optimal performance of equipment.

These conditions make it difficult to lubricate, speeding up the wear process in critical mechanisms.

With more than 30 years of experience, we have been able to develop lubricants that protect the most important equipment in the most extreme conditions:



Different loads



Different vibration levels



Different temperatures



Different contaminants



Different environments



Different speeds

## Greater protection

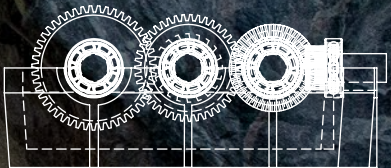
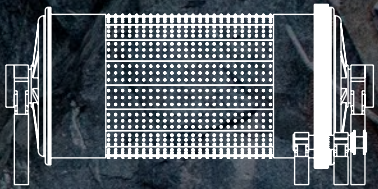
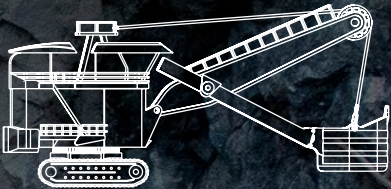
It is our priority at Interlub to maximize the lifespan of your mechanisms. Our lubricants are specially formulated to slow down the wear process of your mechanical components.

## Less stoppage

Correct lubrication ensures availability and optimal functioning of your equipment, avoiding mechanical failures.

## Lower consumption

The optimal lubricant for your application requirements and unique conditions will result in better performance using the exact amount needed to run your equipment.

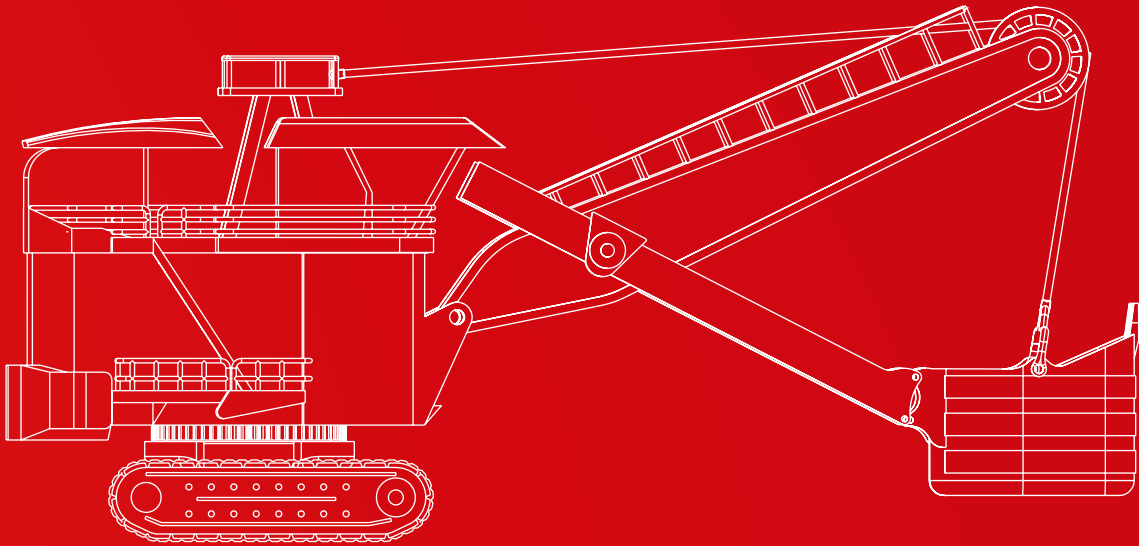




# EXTRACTION AND MOBILE EQUIPMENT

We have bio options for each of these applications.

The equipment used to extract and transport minerals is continuously exposed to aggressive contaminants, oversize loads and high levels of vibration that accelerate the wear of its mechanical components. In addition, strict environmental regulations regulate the use of substances that may spill and pollute the environment.



**Grease for joints and bushings in heavy equipment**

Ultraplex Moly Plus is a grease formulated with molybdenum disulphide and special additives that provide excellent load-bearing and extreme adhesion properties. It helps to reduce wear caused by the vibrations and the impact that occurs during operation.



**Grease for bearings in pneumatic equipment**

Sintaplex HS is a synthetic grease with molybdenum disulphide that provides excellent anti-wear properties and a low coefficient of friction. It is specially designed to lubricate components that operate at medium and high speeds. It supports a wide temperature range.



**Biodegradable grease for open gears in power shovels**

Bioshovel Gear is a biodegradable grease, specifically for open gears that operate under oversize loads, high levels of vibration, humid environments and exposure to contaminants. It forms a lubricant film that is resistant to shearing and accelerated wear.



**Oil for winch gears**

Gear SH Moly high-viscosity oil helps prevent contact between the gear surfaces that operate under oversize loads and high vibration levels. Formulated with molybdenum disulphide, it provides excellent ti-wear protection.



**Grease for joints and bearings in humid environments**

Uniplex EXP is a highly-adhesive grease, resistant to water washout, and designed for bearings that operate in humid environments, with excellent sealing properties.



**Paste for drill pipe threads**

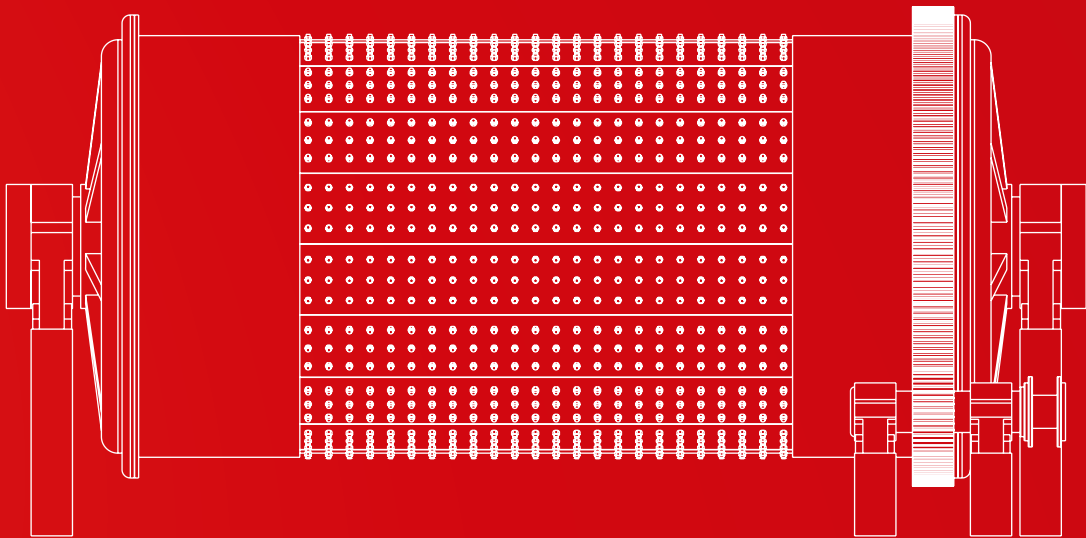
Thread HL is an anti-seize lubricant paste resistant to high temperatures. It facilitates the dismantling of drill pipe threads and protects against corrosion.

# CRUSHING AND GRINDING

We have bio options for each of these applications.

The equipment used for the crushing and grinding processes is one of the most critical elements in the mining industry. Equipment stoppages can cause losses worth millions. Similarly, premature wear and the continuous replacement of mechanisms has a negative impact on the daily production and maintenance budget.

At Interlub, we have developed a wide range of high-performance biodegradable lubricants that guarantee equipment availability, reduce wear and environment impact.



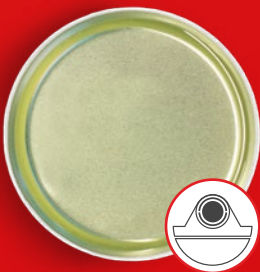
**Biodegradable oil for open gears in mills**

Interfluid Bio RE is a synthetic, biodegradable oil, especially for open gears that require extreme resistance. Interfluid Bio RE with High Touch Technology is formulated with the latest generation of anti-wear and extreme pressure additives, which adhere to the gear surface and provide greater anti-wear protection.



**Grease for pinion bearings in mills**

Sintaplex HS Blanca is a synthetic grease specially designed for components that operate at medium and high speeds. Thanks to its unique formulation, Sintaplex HS Blanca provides excellent anti-wear protection, operating under a wide temperature range.



**Oil for life bearings in mills**

RCE SS is a semi-synthetic lubricating oil of high thermal stability. It creates a thick lubricating film that provides maximum anti-wear protection during the starting and stoppage of equipment.



**Grease for bearings in screens and crushers**

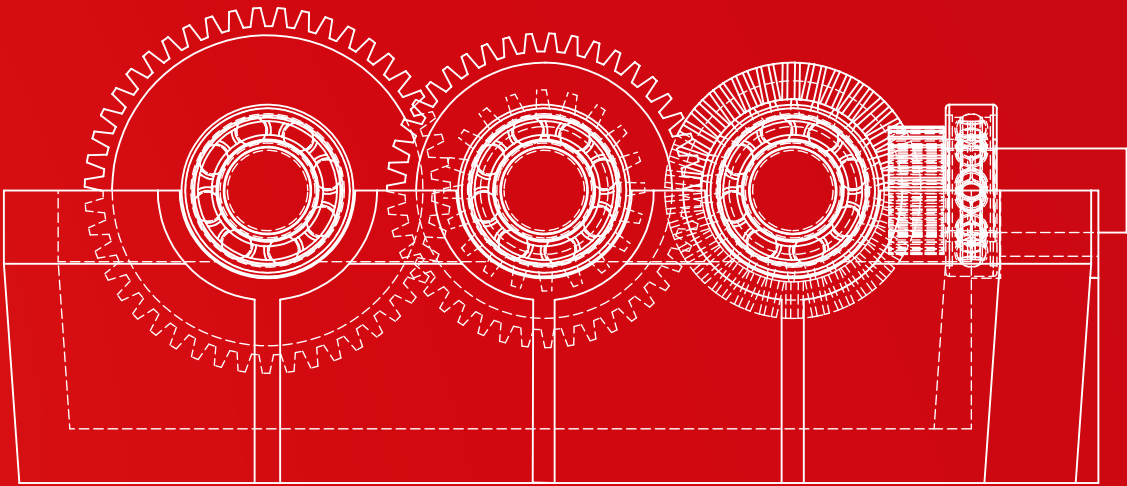
Sintaplex HS is a synthetic grease with molybdenum disulphide that provides excellent anti-wear properties and a low coefficient of friction. It is specially designed for lubricating components that operate at medium and high speeds. It supports a wide temperature range.

# FOUNDRY AND GENERAL EQUIPMENT

*We have bio options for each of these applications.*

The safety of your equipment and your staff are two of the main responsibilities of the maintenance area. Preventive maintenance is critical; however it may affect productivity indicators.

At Interlub we have developed a wide range of lubricants that simplify the maintenance routines and extend the lifespan of the applications.



**Grease for bearings and couplings in cranes**

Ultraplex Moly Plus is a grease formulated with molybdenum disulphide and special additives that provide excellent load-bearing and extreme adhesion properties. It helps to reduce wear caused by the vibrations and the impact caused during operation.



**Grease for crane wire ropes and general equipment**

Intergraf NG is a grease formulated with a solid lubricant base of graphite and additives that provide excellent load-bearing and vibration properties. It offers great metal adhesion and penetration, extending the useful life of the wire ropes.



**Oil for gears in cranes and conveyor belts**

Gear Synt is a synthetic oil with anti-wear and extreme pressure additives, capable of operating under a wide temperature range. Gear Synt extends re-lubrication periods and prevents mud deposits from forming.



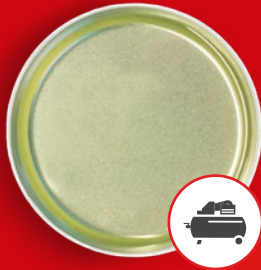
**Lubricant lacquer for all types of chains**

Intermoly 4000 is a lubricant lacquer with great metal adhesion. Intermoly 4000 is formulated with a solid lubricant base of molybdenum disulphide, which provides excellent load-bearing properties and resistance to vibration and impact.



**Anti-seize paste for assembly components**

Cop Metal is an anti-seize paste, designed to withstand extreme temperatures. Its copper, graphite and bentonite-based formulation helps to form a solid lubricant film that separates contact surfaces and extends the life of assembly components.



**Oil for all types of compressors**

C Synt P is a synthetic oil for compressors, compatible with seals. It prevents rust and corrosion in mechanical components, and also eliminates coal, rubber and lacquer deposits. Thanks to its formulation, C Synt P extends the re-lubrication periods.



# SMART TOUCH METHODOLOGY

*Our tool to design all our uncommon solutions*

To ensure optimal protection of your equipment and continue to monitor good lubrication practices, we have developed our own methodology.

SmartTouch guides us through the personal interaction with users and allows us to design and manufacture optimal solutions based on the unique requirements of each of our clients.

360° diagnosis and search of opportunities for improvement.



# SMART TOUCH TECHNOLOGY

*We adapt our cutting-edge technology to your needs*

Based on a 360° analysis and diagnostics test that we created together with the key users of each plant, we are able to determine the best solution for you.

Our platform technology has allowed us to develop over 2000 successful products since 1984. It also gives us the flexibility of formulating a lubricant tailored to your specific needs.

## WE HAVE DEVELOPED 2000 PRODUCTS

### Extensive Catalog of Solutions

Our technical consultants find the best option for each type of operation in our extensive product catalog.

### Flexible Technology

Our R&D team adapts our product formulas to suit our clients' preferences and requirements.

### Disruptive Innovation

Together with our clients and different leading research centers worldwide, we have co-created new development technologies that challenge the paradigms of the industry.

Dare to be uncommon.







## The uncommon lubricant company

### INTERLUB GROUP MATRIZ

Lateral Sur Periférico Norte 559  
Parque Industrial Belenes Norte  
C.P. 45150,  
Zapopan, Jalisco, México

Tel: (+52) 33 3793 8800  
info@interlub.com

### INTERLUB BRASIL

Rua Vicente de Paula Souza e Silva  
322, São Bernardo do Campo, SP.  
CEP: 09861-690.  
Tel: (+55) 11 4124-8436

sac@interlub.com

### INTERLUB GROUP COLOMBIA

Avenida 2 Oeste # 11-60 Cali,  
Valle del Cuaca, Colombia.  
CP. 760046  
Cel: (+57) 314 597 69 53

ilgcolombia@interlub.com

**www.interlub.com**

www.interglass.com.mx

www.intermol.mx

www.intermotive.mx

#### AVISO LEGAL

La información presentada en este documento está basada en nuestras experiencias generales y el conocimiento al momento de publicación de este documento. El contenido está dirigido a lectores con conocimiento técnico. Invitamos a todos nuestros clientes a solicitar un diagnóstico integral con nuestros consultores técnicos. Muestras de productos pueden ser solicitadas en nuestra página de internet. [www.interlub.com/contacto](http://www.interlub.com/contacto).

Nuestro equipo de I+D mejora constantemente nuestros productos, por ende, Interlub S.A. de C.V. se reserva el derecho de cambiar la información técnica en este documento sin previo aviso.