



**Commonwealth  
Electric Company**  
of the Midwest

2111 East 17<sup>th</sup> Street  
Tucson, AZ 85719  
**Ph: (520) 792-3332**  
[rlewis@commonwealthelectric.com](mailto:rlewis@commonwealthelectric.com)

[www.commonwealthelectric.com](http://www.commonwealthelectric.com)

# CATALOG OF SERVICES



**Commonwealth  
Electric Company**  
of the Midwest

**Prepared by:**

Richard Lewis, Branch Manager – Tucson Cell  
520.250.1868  
Email: [rlewis@commonwealthelectric.com](mailto:rlewis@commonwealthelectric.com)

**June 22, 2022**

**Committed to Excellence | Customers, Employees, Character, Mastery**

Columbus | Des Moines | Grand Island | Kearney | Lincoln | Omaha | Phoenix | Tucson 1



# Introductions

## We Want You to Know...

June 22, 2022

### Project Team Members:

Commonwealth Electric is very interested in working with you and your team on your upcoming mining projects. Feel free to share our information with the rest of your construction team.

I have taken the liberty to put together some information to help educate you about our services and our capabilities. You will also see that I have included a section which features a sampling of mining/industrial projects that we are currently working at or have previously performed.

We are certain we can be a valuable part of any project team that you will assemble for your mining project. Our electrical services and low-voltage teams are anxious to provide you with the type of services that is required for a successful project.

We want to thank you for this opportunity to showcase our company, our services, and our culture. Please call or email me if you have any questions concerning this content.

Sincerely,

COMMONWEALTH ELECTRIC COMPANY  
of the Midwest

*Richard Lewis*

Richard Lewis  
Branch Manager - Tucson  
Commonwealth Electric Company  
of the Midwest  
Cell: 520.250.1868  
Email: [rlewis@commonwealthelectric.com](mailto:rlewis@commonwealthelectric.com)



## COMPANY OVERVIEW

### Office Locations & Workforce Presence

Commonwealth Electric Company & Commonwealth Communications Company has eight Midwest and Southwest office locations for electrical services, data communications, and two expo locations. We are very active in the A/E/C communities with design build, bid, negotiated and service markets. Our offices perform work for electrical & data communications, and we contract with industries including, mining, industrial, data centers, healthcare, office, institutional, and retail work. We currently employ over 850 employees. This number includes all managerial and office support staff & field support. We have been providing services to our customers since 1987.

Each office of Commonwealth Electric is operated as a separate profit center. This mode of operation allows for local decisions to help us quickly respond to our customers and allows us to tap resources at other offices when additional resources are required.

Commonwealth offers the security of a large, well-established contractor with the service of a smaller local contractor. The combination of Commonwealth's sound financial foundation, project experience, engineering, data communications, office support, and our commitment to the needs of our customers enables us to successfully complete projects on time and within budget.

Commonwealth Electric Company of the Midwest is an employee-owned company. The adoption of an Employee Stock Ownership Plans (ESOP) has ushered in an ever-growing culture of an ownership mentality and entrepreneurial spirit among our employees. All our non-bargaining employees can participate in the ESOP and share in our company's growth and success. Our ESOP structure reinforces our employee's dedication to our purpose, our core values, and our passion of "*Committed to Excellence*".

Commonwealth Electric Company of the Midwest has adopted the Entrepreneurial Operating System (EOS), as our business operating model, and is in the early stages of its implementation company wide. The EOS system helps us to focus on the six key components that make our business successful: *Vision, People, Data, Issues, Process, and Traction*. This system helps all our teams, from top to bottom, focus their efforts on our company's goals, vision, and core values. While we support the vision of the company, we align our goals with theirs, so each office is working for a common purpose.





## COMPANY SAFETY CULTURE

### SAFETY MINDSET: Starts on Day One

Commonwealth rates safety as one of its highest priorities. We have a complete written policy and follow all guidelines set forth by the State of Nebraska and Arizona, MSHA, OSHA, and other governing bodies. Upon request, a copy of our written safety program will be provided. Additionally, we have implemented a safety committee consisting of equal numbers of field and office personnel. This committee meets quarterly to review accidents, review safety suggestions, implement new safety ideas, coordinate safety training and other safety functions.

Safety training is a vital part of our safety efforts at Commonwealth Electric. We have a continuing safety training program that consists of classes in NFPA 70E compliance, CPR and first aid certification, confined space entry, safe temporary electric installations, powder actuated tool certification and safety, electrical lock out / tag out procedures, excavation and trench safety and various other safety related topics. In addition to our in-house training, all Commonwealth journeymen and foremen have successfully completed the MSHA and 20-hour OSHA certification course and all our project managers have successfully completed the 30-hour OSHA certification course.

Ensuring a safe work environment and managing a proactive safety program is a full-time commitment. Although safety is part of our culture, Todd Longenecker, Corporate Safety Director for Commonwealth Electric, visits each office at least once a month, or upon immediate request, to help promote a proactive safe environment on all job sites.

The safety department ensures all safety equipment and PPE, needed for the project, is available and will provide training on the correct usage of PPE. Commonwealth Electric Company has an established safety and health program. We have been awarded many safety recognition-awards for our achievements in reducing incidents and accidents. Our current EMR of 0.71 reflects our commitment towards a safe work environment by all team members. Safety is a priority at Commonwealth Electric & Communications Company

YTD Results:	EMR: Experience Modifier Rate	Yearly Man Hours:
2021	.71	NA Until 2022
2020	.60	1,637,148
2019	.60	1,530,839
2018	.61	1,282,243

All Commonwealth Electric Company of the Midwest projects promotes a positive work environment to our employees, regarding safety, by providing site-specific safety incentives. All employees are encouraged, and rewarded, for bringing forth new ideas that will help eliminate injuries and accidents. Weekly tool-box meetings are followed by mandatory monthly safety meetings. These mandatory meetings give our associates a platform to voice concerns that may have been noted on other projects or other locations.

All Commonwealth Electric Company of the Midwest projects discuss these concerns and help by bringing positive ideas to minimize future exposures. Safety is a company commitment at Commonwealth Electric & Communications Company.



## ABILITY TO SUPPORT YOUR PROJECTS

### BENCH STRENGTH:

Our people are our greatest asset. Whether you are working with our Field Technicians or Project Managers, our IT or Leadership Team, our Office Staff or Field Support, we embrace your projects as our own. Our highly skilled team of professionals will deliver you a successful project and we guarantee our work. We have offices in Nebraska, Iowa, and Arizona. The specific branch locations are listed below:

#### NEBRASKA:

- Lincoln (Corp.)
- Lincoln
- Omaha

#### IOWA:

- Columbus
- Kearney
- Grand Island
- Des Moines

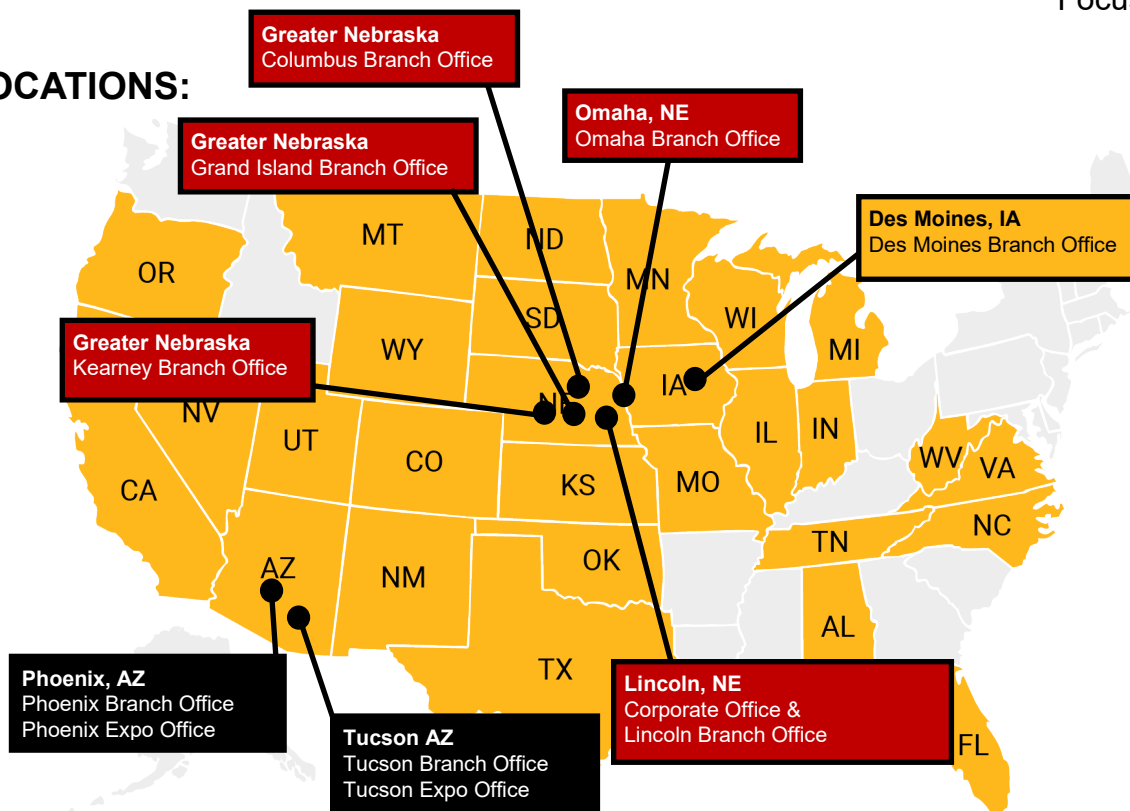
#### ARIZONA

- Phoenix
- Phoenix (Expo)
- Tucson

### HIGHLIGHTS:

- Licensed in 28 States
- Flexibility to Extend Services to Large Area
- Strong Partnerships with GC's
- Industrial, Commercial & Data Center Focused

### OUR LOCATIONS:





## INDUSTRIES WE SUPPORT & WORKFORCE SUPPORT BY BRANCH

Commonwealth Electric has the knowledge and equipment to work in all types of industries. We currently work with many types of customers that operate around the clock. Our approach to our work is well-planned and we will get our work done in a predictable manner. Our goal is to perform all work in a manner that our customer will not have to worry about our team working safe, installing quality work, following the schedule, or slowing them down. Below we have listed for your convenience, the industries that we actively work in.

### INDUSTRIES THAT WE WORK IN:

- Mining/Quarry
- Energy & Utilities
- Food & Beverage
- Meat Processing
- Healthcare
- Pharmaceutical
- Institutional
- Water & Wastewater
- Commercial
- Heavy Industrial
- Banking/Financial
- Chemicals
- Insurance
- Agriculture
- Government
- Hospitality & Gaming
- Media
- Financial Services
- Packaging
- Plastic/Recycling
- Data Centers
- Steel
- Oil & Gas
- Telecommunications

Branch Name:	Location:	Electrical / Field Staff:	Data Comm Staff:	Traffic Crew:	Office Staff:	Workforce Field Support:
<b>Corporate Office</b>	Lincoln, NE	NA	NA	NA	25	NA
<b>Lincoln</b>	Lincoln, NE	X	X	X	22	135
<b>Omaha</b>	Omaha, NE	X	X	X	46	200
<b>Des Moines</b>	Des Moines, IA	X	X		28	173
<b>*Kearney</b>	Kearney, NE	X	X		3	7
<b>*Grand Island</b>	Grand Island, NE	X	X		2	3
<b>*Columbus</b>	Columbus, NE	X	X		6	35
<b>Phoenix</b>	Phoenix, AZ	X	X		14	109
<b>Phoenix (Expo)</b>	Phoenix, AZ	X	X		2	6
<b>Tucson</b>	Tucson, AZ	X	X		13	52
<b>Tucson (Expo)</b>	Tucson, AZ	X	X		1	1

**\*Note:** The Greater Nebraska Offices (\*) are comprised of 3 Centrally Located Nebraska offices: (Current as of May 2021)

- Columbus
- Kearney
- Grand Island



## POWER IN NUMBERS

### EMBRACING TRADITION & PLANNING FOR THE FUTURE:

Commonwealth Electric Company of the Midwest is a local contractor with a significant workforce in Nebraska (Omaha, Lincoln & Greater NE), Iowa (Des Moines area), and Arizona (Phoenix & Tucson). To recruit top talent, Commonwealth Electric is heightening awareness among prospective employees that jobs are in high demand, the skills learned are transferable, and that our company supports education and career development.

Commonwealth Electric is a firm believer in the value of internships and apprenticeship programs. We currently utilize use this group throughout our company to help us meet the needs of all low voltage and electrical projects.

Our field employees start as an Apprentice/Cablers/CW's and progress through the Apprenticeship Program to a licensed journeyman or technicians. We view the apprenticeship Program as an investment in our future. The CECM leaders of tomorrow will graduate from this program and they will help us attract new talent.

We have compiled a strong team, with experience in working with one another for this project. We will utilize both our service department and our projects division, depending on the needs of the project and the demand of the job. We will work with the service department and utilize the use of their vans for smaller quick projects, while leaning on our projects division to tackle the larger projects.

**We pride ourselves in good communication amongst departments and locations where everyone wins, most importantly - our customer.**

#### MANPOWER:

<b>34</b> #Years in Business	<b>8</b> #Locations AZ, IA, & NE	<b>4</b> #Designated Safety Managers & Dedicated Site Managers
<b>80</b> #Ttl Co. Personnel with >20Yrs with CECM	<b>12</b> #Vans within Phoenix & Tucson AZ Service Departments	<b>150</b> #Electricians in Tucson & Phoenix Offices
<b>32</b> # Electricians in AZ Offices with MSHA Certifications	<b>606</b> # Ttl Co. Field Staff Support	<b>154</b> # Ttl. Co. Office Support Staff





## OUR CORE VALUES

### OUR PEOPLE:

We feel the secret to success is hiring the experts within the telecom & electrical industry, providing them with technical training, supplying them with the materials and support they need to be successful, while developing strong relationships with our customers.

We have identified a set of core values that define our company, they are:

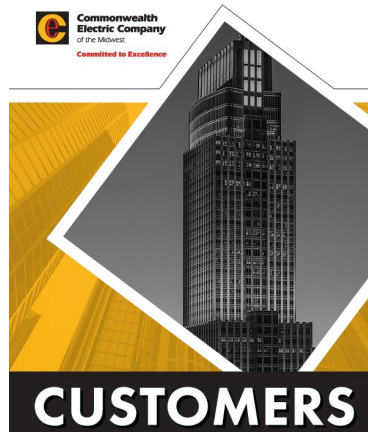
**CUSTOMERS**  
**EMPLOYEES**  
**CHARACTER**  
**MASTERY**

We are passionate and dedicated to our customers, and we are committed to delivering innovative solutions to your complex data and electrical projects.

We provide a safe working environment that fosters the empowerment, building, and growing of great employees. We hire candidates with high character; they in turn reassure our customers, through their actions, that we are the best at what we do. We will embrace each project, and we always deliver a safe & successful project to our customer. Our attention to quality is second to none.

We are supported in our service efforts, by all our office locations in Nebraska, Iowa, and Arizona.

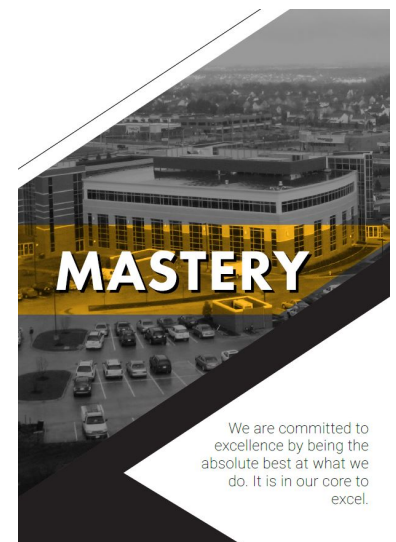
Commonwealth Electric Company of the Midwest and our sister company, Commonwealth Communications Company are an ideal resource to partner with on your next data and/or electrical project. We have been instrumental in helping our client(s) to design their projects, provide strategies and budgets that work, to creating designed drawings to fit the needs of their project. We also understand that our clients may have relationships with an Architect/Engineer that has served their facility/company needs over the years. In this



We are committed to excellence by helping our customers succeed by solving challenging complex projects through innovative solutions.



We are committed to excellence through integrity, ethics, and a sense of fair play. If we do something, we do it right.





case, we encourage our clients to bring us in early, so we can start to collaborate with their facility users and architect/engineers.

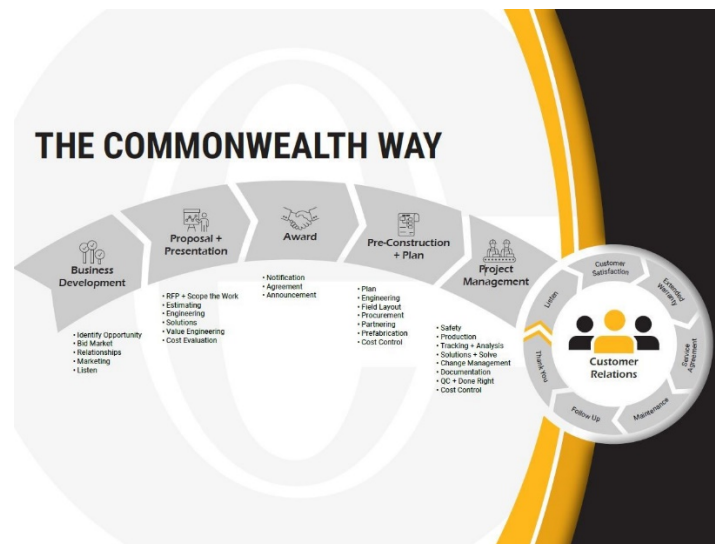
**Our goal is simple:** Provide our owner/customer with a quality product and getting it done right the first time. We can deliver fewer RFI's, change orders, building code issues, and plan for other issues with project plans and a good understanding of the project specifications.

## 8 Locations Committed to Excellence:

# THE COMMONWEALTH WAY







Commonwealth Electrics is an expert in handling challenging and highly technical data communications and electrical projects; however, do not be fooled, Commonwealth is anything but common. As a leading data & electrical contractor in the Midwest and Southwest, we are constantly striving to achieve the best and exceed the needs and expectations of our customers.

Since the company was established in 1987, Commonwealth Electric Company of the Midwest has grown a reputation in providing quality services done right the first time, every time. This is the "Commonwealth Way," a standard of expertise that we have upheld for more than 34 years.





## OUR SERVICES:

<p><b>LOW VOLTAGE:</b></p> 	<p>From data centers to medical facilities, Commonwealth Communications is your complete low voltage contractor for all your communication system needs. Whether it is an addition to an existing system or new warranted and certified installation, we have the trained, professional technicians for all your system needs, 24 hours a day. Our project support team consists of electrical engineers and Registered Communications Distribution Designers (RCDDs). Our installers have BICSI certifications &amp; NJATC low voltage training.</p>
<p><b>INDUSTRIAL:</b></p> 	<p>Commonwealth Electric of the Midwest has extensive experience in electrical contracting and building all types of projects for clients. We provide value engineering, material procurement, design input, life cycle cost analysis and dollar saving installation alternatives for our customers. We can also work as a team member with contractors, engineering and architects through all planning and construction phases to protect our client's building investments. Quarry work to wastewater treatment facilities, our staff will meet the needs of your project.</p>
<p><b>INSTITUTIONAL:</b></p> 	<p>The fast-tracking process, employed by Commonwealth Electric of the Midwest for such repetitive-pattern installations as hospitals and schools, allows for the initiation of actual construction work before building designs are finalized. The time-saving benefits of fast-tracking have proven particularly valuable to developers working within tight completion schedules. Let us know how we can serve your next Institutional project.</p>
<p><b>COMMERCIAL:</b></p> 	<p>CECM has the team, experience, and skills to complete large- &amp; small-scale commercial projects for data centers, local businesses, municipalities, and more. We can partner with you early on, to ensure that everything we do meets your needs and specifications. Whether your need is to upgrade electrical components, remodel an entire system, or improve your electrical and data communications, we can do the work.</p>
<p><b>SERVICE WORK:</b></p> 	<p>We maintain a complete fleet of well-equipped service vans at each of our 8 locations. Each of our electrical service associates is dedicated to our goal of customer satisfaction. We are the electrical contractor you can count on for reliable and prompt service.</p> <ul style="list-style-type: none"> <li>• Reliable after-hours dispatching system</li> <li>• High voltage splicing &amp; terms</li> <li>• Instrumentation &amp; Controls</li> <li>• Trenching &amp; Underground Electrical</li> <li>• Specialized Tools</li> <li>• Equipment Readily Available</li> </ul>
<p><b>OUTDOOR LIGHTING/TRAFFIC SIGNALS:</b></p> 	<p><b>LIGHTING:</b> We can help you with any outdoor lighting project. We can help you with security lights, ornamental/decorative, industrial, commercial, or parking lot lights.</p> <p><b>FIBER OPTICS:</b> We have installed, tested, and terminated miles of fiber optic cable for data centers, local utilities, hospitals, and more. Our Optical Time Domain Reflectometer (OTDR), used for testing and certification of fiber optic cable is state-of-the-art. Our qualified team of professionals is well trained to analyze or troubleshoot your connectivity and maintain access to your vital data systems.</p>



## LINE CARDS: ELECTRICAL

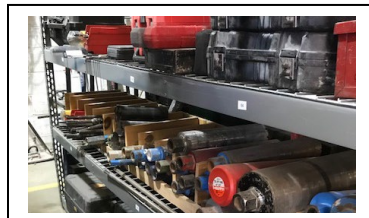


### Commonwealth Electric Company

of the Midwest



- High Voltage Splicing and Termination
- Trenching & Underground Electrical Work
- Specialized Tools & Equipment Readily Available
- Temp. Wiring - Special Events Department
- 24 Hour Service, 7 Days a Week
- Instrumentation & Controls
- High-Reach Work
- Licensed, Bonded & Insured
- Consistently On Time/On Budget
- Full-Time Safety Director and Safety



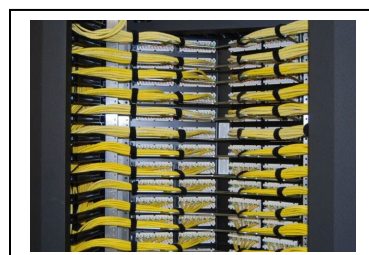
#### PREVENTATIVE MAINTENANCE:

- Circuit Breaker Testing (Primary & Secondary)
- Infrared Scanning
- Cable Testing
- Transformer Testing
- Oil Sampling
- Insulation Testing
- PF Testing



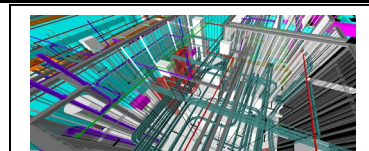
#### COMMUNICATIONS:

- Voice Data Networks
- Access Control
- CCTV Systems
- Aerial & Direct-Buried OSP
- Fiber Optic Cables & Controls
- Fire Alarm / Burglar Alarm
- Local Area Networks (LAN)
- Wide Area Networks (WAN)
- Wireless Networks
- JP Video Management
- Structured Cabling
- Intercom Systems



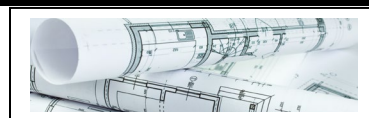
#### ENGINEERING:

- Design/3D Modeling & BIM
- Power Quality Analysis
- Short Circuit Studies
- Breaker Coordination
- Fault Current Studies
- Arc-Flash Studies



#### DESIGN BUILD SERVICES:

- Engineers on Staff with Design Expertise
- Building Information Modeling (BIM)
- PLC Design & Programming
- On-Time Completions



**Omaha, NE Office:** 402-331-1414  
4225 S. 89th Street, Omaha, NE 68127  
**Lincoln, NE Office:** 402-474-1341  
1941 Y Street, Lincoln, NE 68501  
**Columbus, NE Office:** 402-563-9334  
472 26th Ave., Columbus, NE 68601  
**Grand Island, NE Office:** 308-675-3030  
1504 E. 4th Street, Grand Island, NE 68801

**Kearney, NE Office:** 308-234-6950  
1917 Central Ave., Kearney, NE 68848  
**Des Moines, IA Office:** 515-288-5783  
1530 2nd Avenue, Des Moines, IA 50314  
**Phoenix, AZ Office:** 602-437-0354  
3901 E. Winslow, Phoenix, AZ 85040  
**Tucson, AZ Office:** 520-792-3332  
2111 E. 17th Street, Tucson, AZ 85719







## LINE CARD: DATA COMMUNICATIONS



### **Commonwealth Communications** a division of Commonwealth Electric

Commonwealth Communications is a sister company to Commonwealth Electric Company of the Midwest. The Commonwealth Communications Capabilities Line Card is listed below.

## LINE CARD: OUR CAPABILITIES



### **Structured Cabling**

- Design & Installation of Pathways for Complete Structured Cabling
- Design & Installation of ER & TR Equipment
- Installation of OSP Cabling, Pathways, and Equipment
  - Fiber Optic Cable Installation
  - Fiber Optic Cable Fusion Splicing
  - Complete Fiber Testing and Certification & Warranty
- Installation of Components of the Horizontal Cabling System
  - Conduit & Pathway Installation
  - Horizontal Cable Installation
  - Backbone Fiber Installation
  - Copper & Fiber Splicing and Terminations
  - Copper Testing, Certification, and Warranty



### **Intrusion Detection:**

- Facility Monitoring for After Hours
- 24/7 Panic Alarms
- Fire Panel Monitoring
- Central Station Monitoring

### **Video Surveillance:**

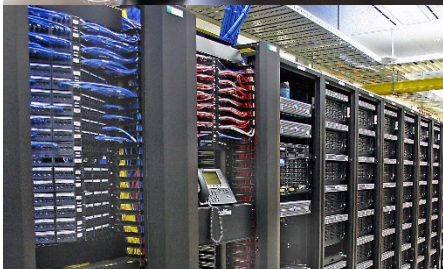
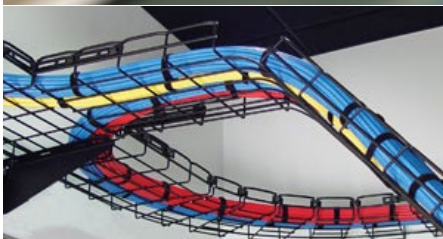
- On-site video monitoring & recording
- Remote Viewing
- Customer Server Solutions
- Cloud Solutions
- Video Analytics

### **Intercom Systems:**

- Emergency Call Stations
- Stand-alone Entrance Systems
- Room-to-Room Intercommunication
- VOIP
- Multi-tenant

### **Access Control:**

- Building Controls to Monitor & Control Access to Secured Areas
- Visitor Management
- Parking Controls
- Biometric Readers



## Additional Services:

- |                      |                     |                                 |
|----------------------|---------------------|---------------------------------|
| • Design-Build       | • Fire Alarm        | • Aerial & Direct Buried OSP    |
| • System Integration | • Burglar Alarm     | • Fiber Optic Cables & Controls |
| • System Auditing    | • Access Control    | • Local Area Networks (LAN)     |
| • Mesh Networks      | • CCTV Systems      | • Wide Area Networks (WAN)      |
| • Audio/Video        | • Wireless Networks |                                 |



## OUR SERVICES DEPARTMENT: Every Location Ready to Serve



### Service, Maintenance Work, & More

Commonwealth Electric of the Midwest maintains a complete fleet of well-equipped service vans at each of our locations. Each of our electrical service associates is dedicated to our goal of customer satisfaction. We are the electrical contractor you can count on for reliable and prompt service.

Commonwealth Electric of the Midwest also offers 24-hour emergency repair and maintenance services at all our locations. All our services are provided by licensed, bonded, and insured electrical professionals who are supported by our Commonwealth Electric fully equipped vans.

#### Services We Offer:

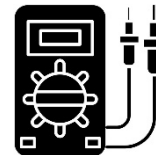
- Reliable after-hours dispatching system.
- High voltage splicing and termination.
- Instrumentation and controls
- Trenching and underground electrical work
- Specialized tools and equipment readily available



COMPLETE  
ELECTRICAL NEEDS &  
PREVENTATIVE  
MAINTENANCE



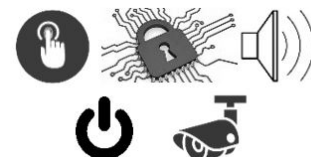
ELECTRICAL/CONSTRUCTION  
MANPOWER



TECHNICAL SERVICES &  
TESTING



ELECTRICAL ENGINEERING  
SOLUTIONS TO YOUR  
PROJECT NEEDS

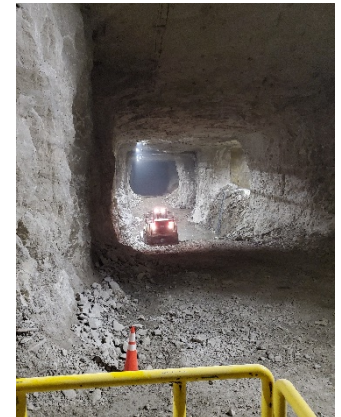


DATA &  
COMMUNICATIONS



## SIMILAR QUARRY PROJECTS

### MARTIN MARIETTA MATERIALS



#### CLIENT OWNER

Martin Marietta

#### LOCATION

Fort Calhoun, NE

#### CONTRACT AMOUNT

Multiple Projects

#### PROJECT SIZE

NA

#### GENERAL CONTRACTOR

Martin Marietta & CECM

#### SERVICE & PROJECT WORK

**Description:** Commonwealth Electric has worked at the quarry site in Fort Calhoun, NE for approx. 10 years. We perform both, above ground and below the ground work at the quarry. During our time at the Fort Calhoun site, we have been asked to perform several different projects. Listed below, are some of those projects:

##### Maintenance & Repair Work in all areas of the Campus:

- General Site Work (Above Ground)
- General Site Work (Below Ground)

##### Capital Projects on Merck Campus:

- Slurry Project
- C.E.R. Slave Project

Commonwealth Electric of the Midwest takes an emphasized safety approach on all our quarry projects. We consistently strive to meet the expectations of Martin Marietta. We have consistently met all the safety and procedural requirements that must be met to work at the Fort Calhoun quarry, the Springfield quarry, and their two sandpits. Some of the safety requirements that we follow are listed below:

##### Safety & Procedural Requirements:

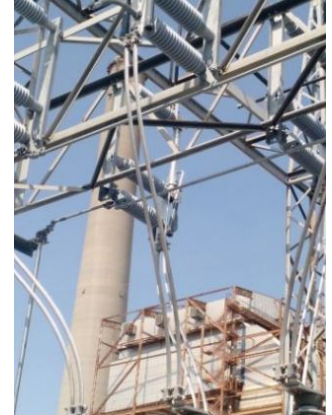
- Proper PPE
- Lock-out/Tag-out (LOTO) Procedures
- Permitting & JSA
- MSHA Part 48 (Below Ground)
- MSHA Part 46 (Above Ground)





## SIMILAR PROJECTS

### MIDAMERICAN ENERGY COMPANY



#### **CLIENT OWNER**

MidAmerican Energy

#### **LOCATION**

Council Bluffs, IA

#### **CONTRACT AMOUNT**

Multiple Projects

#### **PROJECT SIZE**

Multiple Projects

#### **GENERAL CONTRACTOR**

NA

#### **COAL HANDLING AUTOMATION**

During the fall outage at MidAmerican Energy Company in the Council Bluffs, IA, Commonwealth Electric successfully modified the existing coal conveyor system to operate using the PLC control logic. This project consisted of replacing the existing relay logic with PLC systems in four locations, along with installing a PLC in the newly constructed Unit 4 Marshalling panel.

The existing Coal Unloading Building control room was remodeled to accommodate the addition of two HMI's and several LCD flat panel monitors. These HMI's and PLC's were then tied into the existing Modicon PLC Network, thus completing the control loop. By doing so, the control of the plant's Coal Handling System was moved from the Unit 3 Control Room to the Coal Unloading Control Room. With this system in place, the coal conveyor system is now controlled from the same location where the train cars are dumped.

A small sampling of other MEC projects that we have been part are listed below:

- MEC Monofill cell 8 & 9
- Unit 3 Control room move
- MEC Camera Project
- MEC Air Cure Co Monitor (Planned Fall 2021)



## SIMILAR PROJECTS

### ASHGROVE CEMENT COMPANY



#### **CLIENT OWNER**

Ash Grove Cement Company

#### **LOCATION**

Louisville, NE

#### **CONTRACT AMOUNT**

Multiple Projects

#### **PROJECT SIZE**

Multiple Projects

#### **GENERAL CONTRACTOR**

Direct to Ash Grove or w/Multiple GC's

#### **SERVICE & CAPITAL PROJECTS**

Commonwealth Electric has had the privilege in working on-site at the Ash Grove Cement Company in various capacities. The quarry has been open since 1929. We have been working on-site for close to 20 years, where we have been asked to perform several different projects.

Most of the work that we perform for Ash Grove is directly to them. We have also performed capital projects while working under the direction of different General Contractors. Some of the projects that we have performed for Ash Grove are listed here:

- Quarry Material Handling Project
- Baghouse Solenoids
- Ash Grove PLC Swap
- Trash Compactor Upgrade
- Ash Grove Entrance Lighting
- Water Skid Install
- 120 Volt Vibrator Boxes Install



**THANKS**

**Thank you for your interest in  
Commonwealth Electric  
Company  
of the Midwest.**

**We appreciate it.**